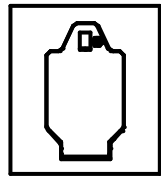


Removable Padlock Square Bollard Mild Steel Powder Coated

Removable Padlock Square Bollard quickly and easily restrict or allow to access your property.

The Embedment Sleeve lid conveniently secures the removable bollard into place with a padlock. When the bollard is removed, the sleeve's lid closes over the opening for a smooth surfaced and can be secured into place.

Lid and top plate are anti slip pattern, and are available plain surface plate on request. This Bollards are manufactured from mild steel and are available in choice of powder coat colors.



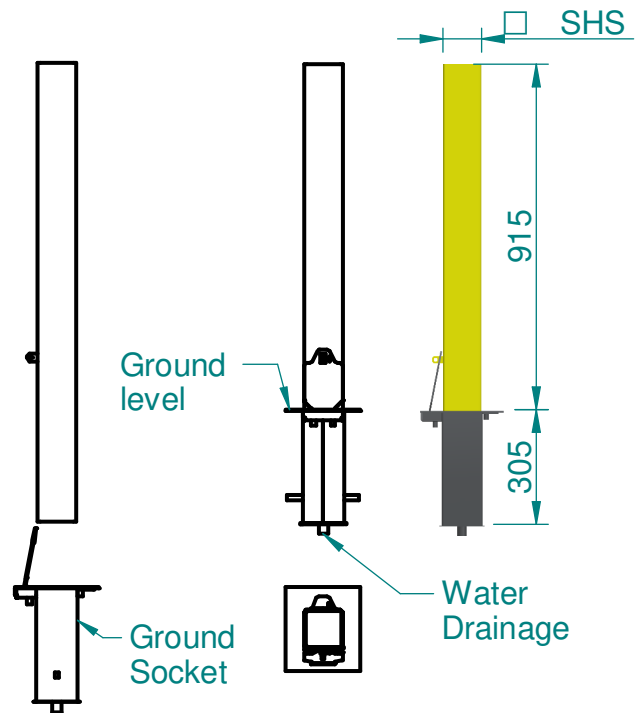
Close position

Specifications:

- Material: Mild steel
- Finish: Powder coated
- Color : Signal yellow as standard
- Water drainage connection
- Three type of Top(Cap) style
- Size and wall thickness mention in below table

Options:

- Padlock
- Choice of colors
- Storage sleeve floor / wall mounting
- Reflective tape
- Ground socket plate & lid plain surface
- Customize height
- High strength material

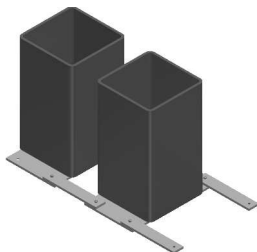


Bollard removal Secured Bollard

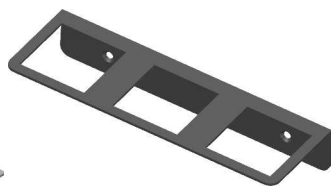
Models

SHS & Wall Thickness	4" / 0.12	4" / 0.19	4.5" / 0.12	4.5" / 0.19	5" / 0.12	5" / 0.19	5.2" / 0.12	5.2" / 0.19	6" / 0.12	6" / 0.19
Flat Top	3204-10	3204-11	3204-12	3204-13	3204-14	3204-15	3204-16	3204-17	3204-18	3204-19
Angled Top	3204-20	3204-21	3204-22	3204-23	3204-24	3204-25	3204-26	3204-27	3204-28	3204-29
Diamond Top	3204-30	3204-31	3204-32	3204-33	3204-34	3204-35	3204-36	3204-37	3204-38	3204-39

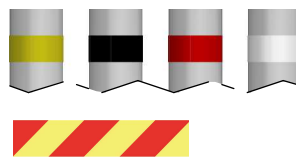
Optional Items:



Storage sleeve floor



Storage sleeve wall mounting



Reflective tape

Yellow, Black, Red, White, Red & yellow

Cap Styles



Flat

Angled

Diamond