

## Removable Internal Locking Square Bollard Powder Coated

Removable internal locking bollard quickly and easily restricts or allow to access to your property.

The locking mechanism is inside the embedment sleeve. This Bollards are impossible to remove without the key which is placed on the bollard for easy acces. When the bollard is removed, the locking lid cover matched with the ground level.

Lid and top plate are anti slip pattern, and are available plain surface plate on request.

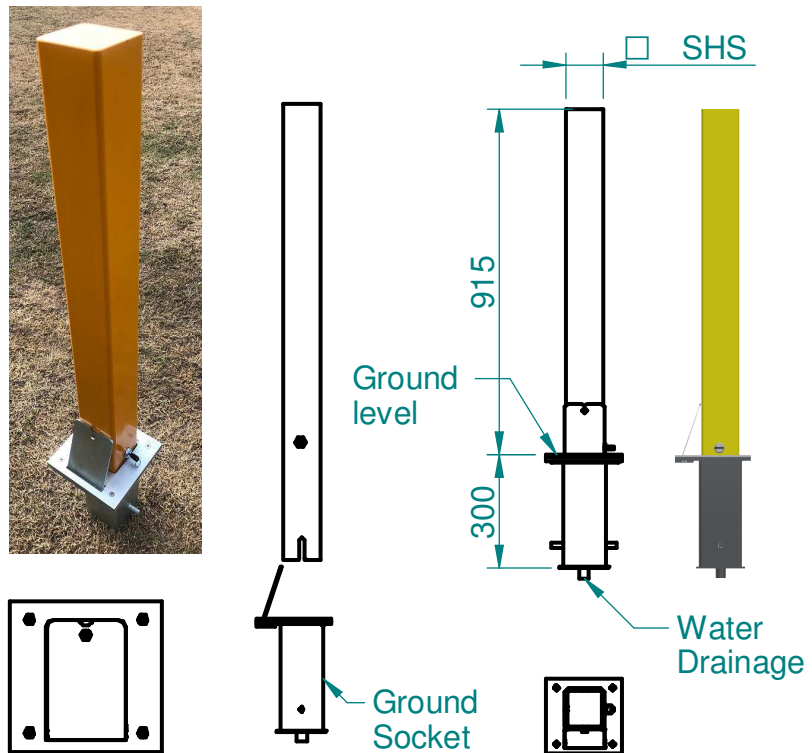
This Bollards are manufactured from carbon steel and are available in choice of powder coat colors.

### Specifications:

- Material: Mild Steel
- Finish : Powder coated
- Color : Standard signal yellow  
Ground socket Black
- Cam lock with key
- Three type of Top Flat / Angled / Diamond
- Water drainage connection
- Size and wall thickness mention below table
- Ground socket top plate and lid replacable

### Options:

- Choice of colors
- High strength material
- Storage sleeve floor / wall mounting
- Reflective tape
- Ground socket plate & lid plain surface
- Customize height



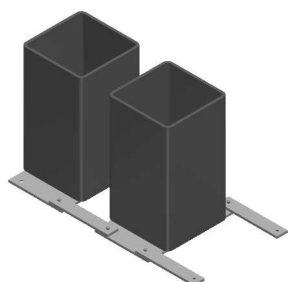
Close position    Bollard removal    Secured Bollard

### Models & Sizes

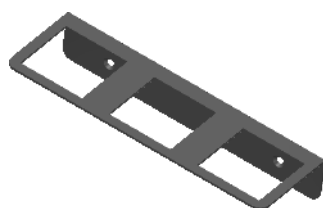
SHS & Wall Thickness	4" / 0.12 100 / 3 mm	4" / 0.19 100 / 5 mm	4.5" / 0.12 113 / 3 mm	4.5" / 0.19 114 / 5 mm	5" / 0.12 125 / 3 mm	5" / 0.19 125 / 5 mm	5.2" / 0.12 132 / 3 mm	5.2" / 0.19 132 / 5 mm	6" / 0.12 150 / 3 mm	6" / 0.19 150 / 5 mm
Flat Top	3208-10	3208-11	3208-12	3208-13	3208-14	3208-15	3208-16	3208-17	3208-18	3208-19
Angled Top	3208-20	3208-21	3208-22	3208-23	3208-24	3208-25	3208-26	3208-27	3208-28	3208-29
Diamond Top	3208-30	3208-31	3208-32	3208-33	3208-34	3208-35	3208-36	3208-37	3208-38	3208-39

### Optional Items:

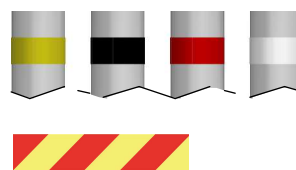
### Cap Styles



Storage sleeve floor



Storage sleeve wall mounting



Reflective tape

Yellow, Black, Red, White, Red & yellow



Flat    Angled    Diamond